

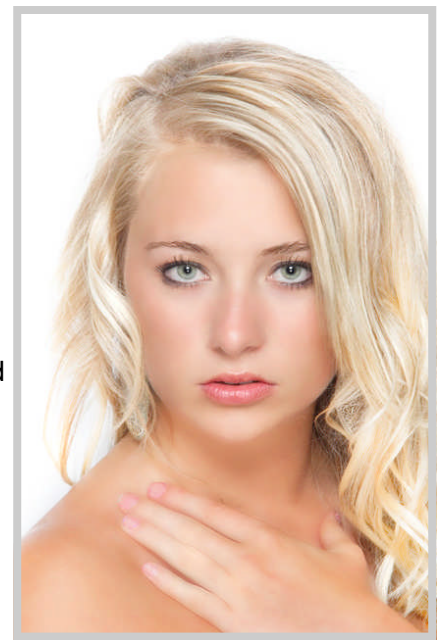
# Custom Product Photography Workshop

## Introduction

Like so many other photographers, you too have dreamed of one day opening your own portrait studio. Why not start living that dream today!? The need for portrait photography is everywhere, from business people, to families, children, couples, and single adults. If you want to make money in professional photography, having your own studio is often a must, but what good is having a studio unless you know how to use it? Maybe you have lighting equipment and are unsure how it all works. Portrait photography is big business and the lighting is not just a simple matter of setting up a light or two and shooting a portrait. As every successful studio portrait photographer will tell you, you must really understand lighting and all of its unique characteristics and variables if you want to succeed!

We have developed a workshop designed for photographers with no experience and who have no time for a normal workshop. Our day will be divided into two parts: the classroom and the 'hands on'. We will begin the day in the classroom where we will cover the basics of lighting, light quality, and posing. You will learn the difference between lighting with umbrellas and light boxes, key light and fill lights, light grids and barn doors, background lights, hair lights, flat light and contrasty light, fill cards and reflectors, lighting patterns and ratios, light meters, and photographing people with glasses.

Extensive demonstrations will show you how all this equipment works. During the 'hands on' part of the workshop, you will be provided all the lights and accessories to create your own studio set up and practice what you have learned with a model. These workshops include all equipment for the workshop: lights, umbrellas and light boxes, booms, light stands, grids, and backgrounds.

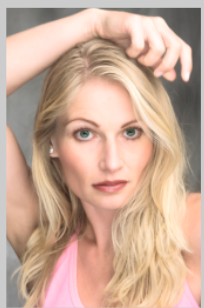


## Custom Workshops



The Custom Studio Photography Workshop is perfect for those interested in learning basic through advanced studio portrait photography. These workshops include all equipment (bring your own cameras, laptop, and tripod) for the workshop such as: lights, umbrellas and light boxes, booms, light stands, grids, and table top set-ups and backgrounds.

This workshop can run with 1– 4 students (2 studio setups) over 1-2 days. The one day is the basic intro to portrait lighting and posing. Add a 2nd day and we will delve much deeper into various lighting techniques including beauty lighting and Photoshop retouching techniques.



These workshops take place in Bend, Oregon and can also be conducted at your fully outfitted studio. One-on-One Workshops in Bend, Oregon \$695 per day. Other locations: \$695 per day plus travel/time/expenses. Model fees are additional and average \$100-\$150. (You may bring your own model)

Custom Lighting Workshop: 2-3 persons (your group) in Bend, Oregon, \$595 per day/person. Other locations: prices are the same plus travel/time expenses. Model fees are additional and average \$100-\$150. (You may bring your own model).



You may combine the Studio Portrait and Studio Product into a two day workshop. One-on-One is \$1200 for the 2 days and the Custom Workshop for small groups is \$850 for the two days per person. Other locations are the same rates plus travel time/expenses.

**For more information visit:**  
<http://aspenphotoworkshops.com/customworkshops>

